



novotegra Mounting solutions Flat roof III



Mounting solution for flat roofs



- Self-engineered mounting system, established on the market since 2006
- Solutions for different roof membranes
- Easy and completely free of charge planning via online tool Solar-Planit
- Free first-time installation support
- Quick mounting thanks to pre-assembled parts
- TÜV and DEKRA certified quality, CE marking
- Static calculation according to Eurocode and SIA norms
- 12 year product warranty



novotegra flat roof system east-west III

With our east-west III mounting system, you can optimize the use of the surface area of your flat roof. With an elevation of 10° electricity production is distributed evenly throughout the entire day.

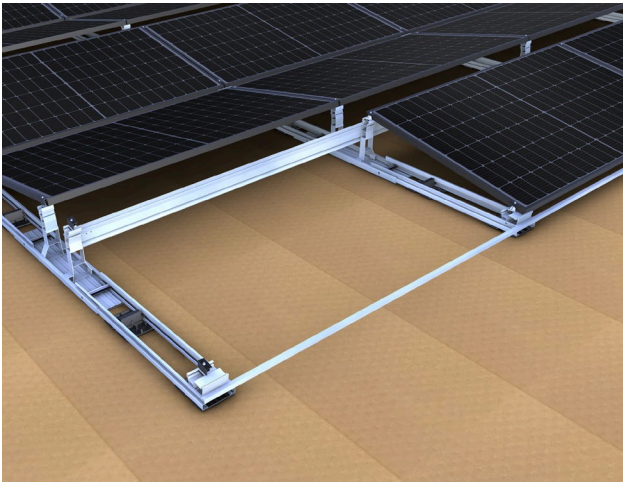
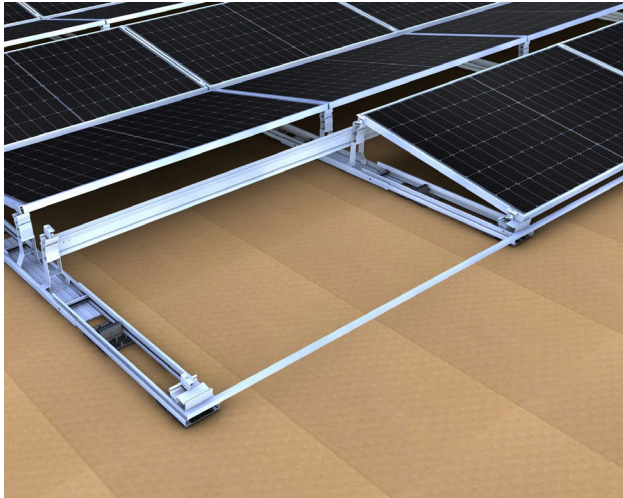
Due to the optimized aerodynamics of our system it requires very little ballasting: an advantage especially for flat roofs with low load reserves.

Your benefits:

- No penetration of the roof membrane
- Optimization of the use of the roof surface
- Electricity production is distributed evenly throughout the entire day, no peaks
- Quick and easy mounting
- High degree of prefabrication of the system components
- Short and handy system components with click-fit connection
- Simple and improved logistics and site handling



Flat roof system East-West III | Details



- Middle and end clamps in blank and black anodized
- Installation-friendly thanks to click-in mechanism
- No falling out or slipping thanks to PE pad underneath the rail nut

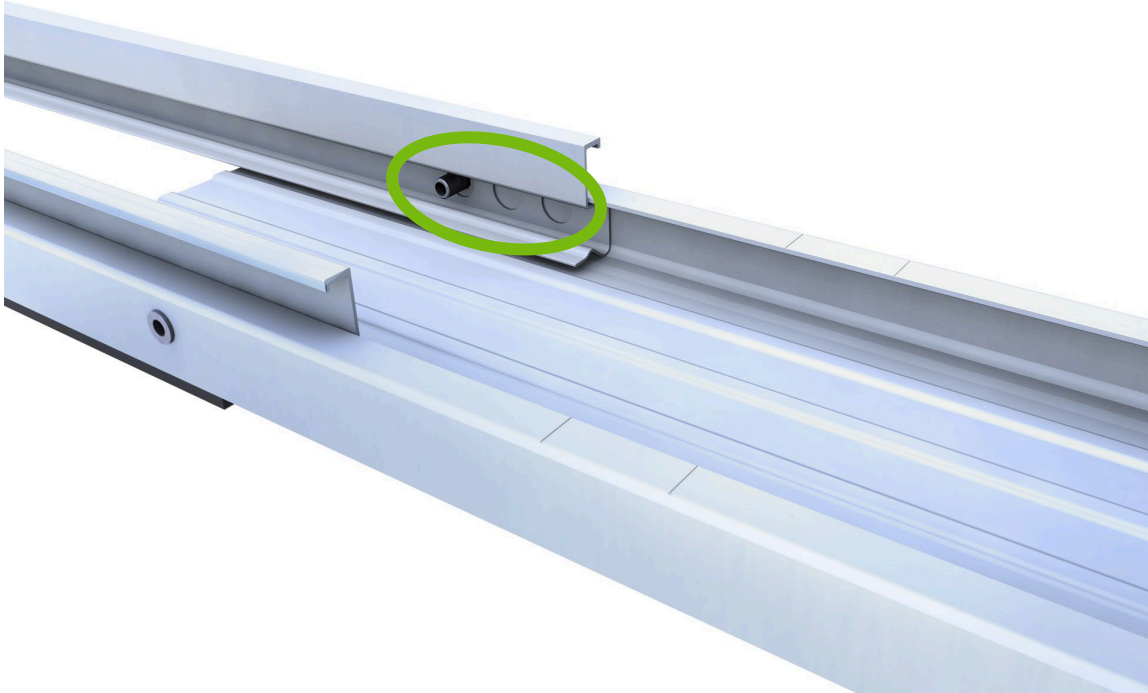


- Rear module support, to clip into the base element
- to connect the crossbar and/or cable channel module support
- Support head in familiar C-channel design



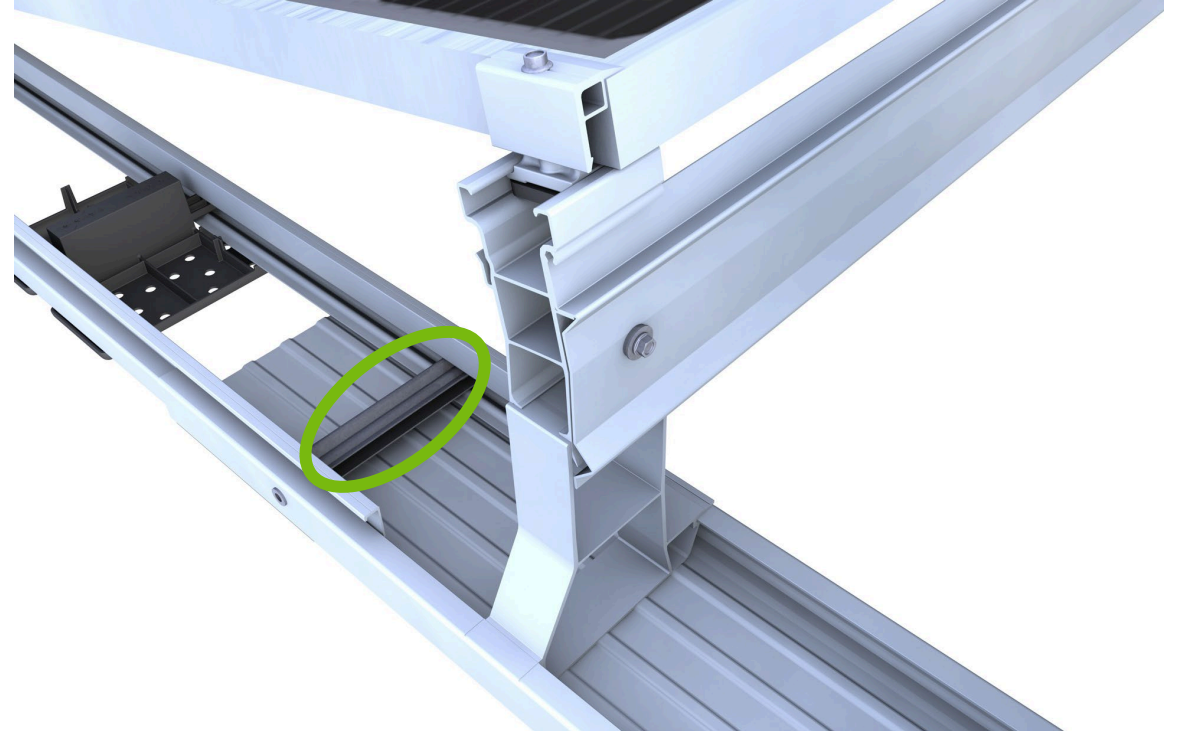
- Base element e/w 690mm, compatible for module widths 995-1070mm.
- Base element e/w 840mm, compatible for module widths 1071-1145mm.
- for click-fit of the module supports and connection of connector and edge closure sets

Flat roof III: Connect rails and secure connection



Connect rails

The click-fit connection is created by clicking the connector and edge closure sets into the base elements.
The module width is defined by the snap-in position.

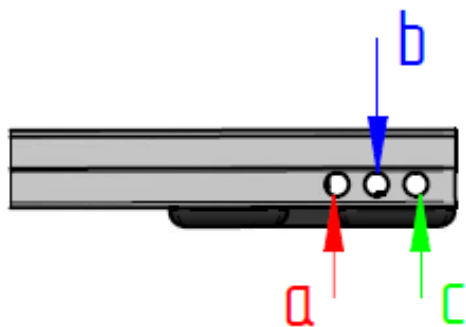
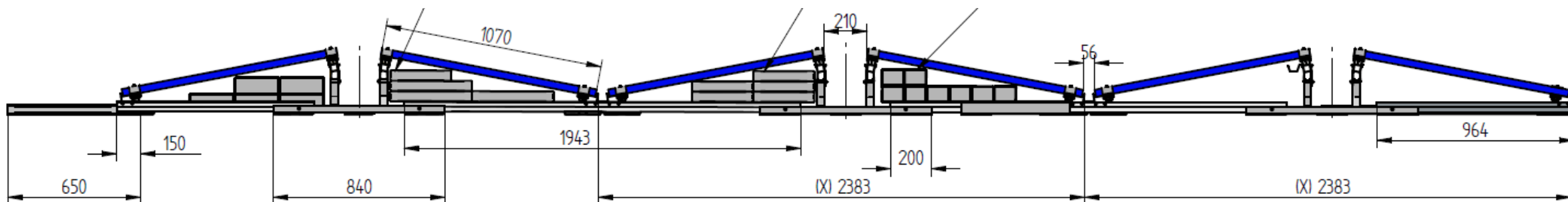


Secure connection

Each click-fit connection must be secured with the system fuse.



Flat roof III – Module defines dimensions



Modulbreite	Basiselement	Maß X	Klickposition
>=995 bis <= 1020 mm	690 mm	2230	a
>1020 mm bis <= 1045 mm	690 mm	2283	b
>1045 mm bis <= 1070 mm	690 mm	2333	c
>1070 mm bis <= 1095 mm	840 mm	2383	a
>1095 mm bis <= 1120 mm	840 mm	2433	b
>1120 mm bis <= 1145 mm	840 mm	2483	c

More components



Edge closure set

Edge closure set with integrated base foot as front module support at installation edges



Connector set e/w

Connector set e/w with integrated base feet as front module support in installation middle areas



Crossbar

Crossbar for load transfer, connected to the module supports of flat roof system III.



Support brace 20x20x1,5

Support brace for load transfer, fixed on the flat roof module support set east-west II.



Contact latch module clamp

Contact latch for equipotential bonding / lightning current carrying capacity between module frame and mounting system.



Grounding connector

The grounding connector is used to include the edge closure sets, connector sets or the base element in the lightning protection.

More components



Cabel channel base element

to be connected to the base elements and to lay cables lengthwise.

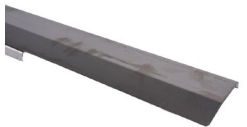
optional



Cabel channel module support

to be connected to the module supports and to lay cables crosswise.

optional



Cover cable channel

Cover for the cable channels to protect the cables from UV radiation, weather conditions and animals.

optional



Sureface extension 180x150mm

Surface extension for flat roof system III to increase the load introduction surface.

optional

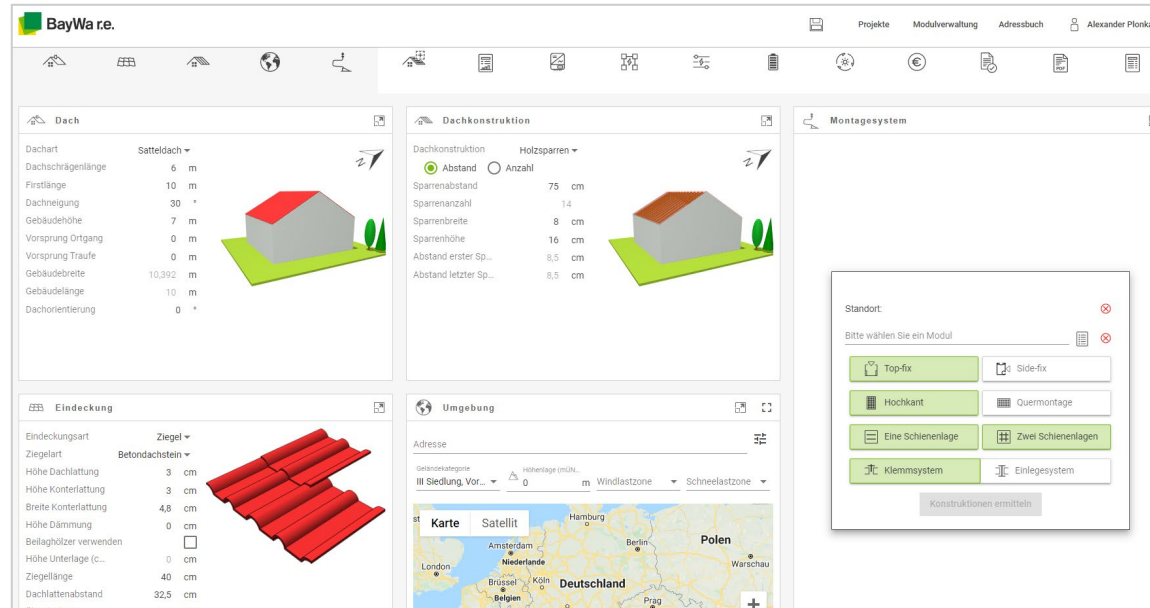


Ballast cantilever 650mm / 1150mm

Ballast cantilever to redistribute ballast at installation edges.
Usable length 500mm / 1000mm

optional

Our free planning tool Solar-Planit



Our Solar-Planit

- Complete system planning
 - Mounting system design & static calculation
 - Module configuration
 - Inverter design & suitable storage
 - Yield & profitability
 - System documentation
- System planning in a few minutes thanks to intuitive operation
- Free and web-based incl. free webinars
- Transmission to our webshop
- Availability can already be taken into account during planning

Use our [Solar-Planit!](#)

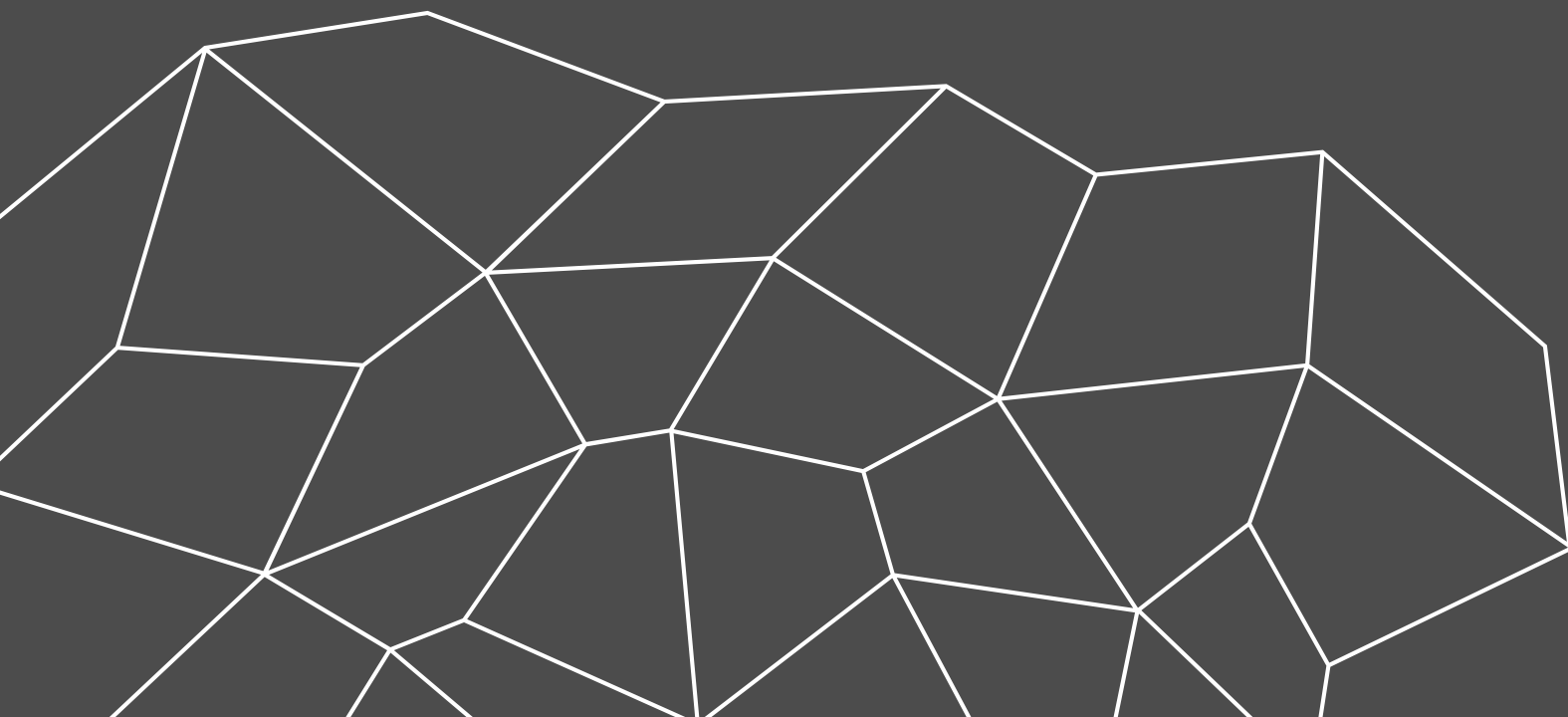
Our free first-time installation support



Our first-time installation support

- Support and instruction by a technical consultant during installation
- Instruction and support around the mounting system
- Discussion of the results of the static calculation
- Tips & tricks around novotegra
- For free!

For more information, please visit our [Website](#) or contact your personal representative!



Thank you!

novotegra GmbH

info@novotegra.com

Copyright

© Copyright novotegra GmbH, 2023

The content of this presentation (including text, graphics, photos, tables, logos, etc.) and the presentation itself are protected by copyright. They were created by novotegra GmbH independently.

Any dissemination of the presentation and/or content or parts thereof is only permitted with written permission by novotegra without written permission of novotegra, this document and/or parts of it must not be passed on, modified, published, translated or reproduced, either by photocopies, or by others – in particular by electronic procedures. This reservation also extends to inclusion in or evaluation by databases. Infringements will be prosecuted.