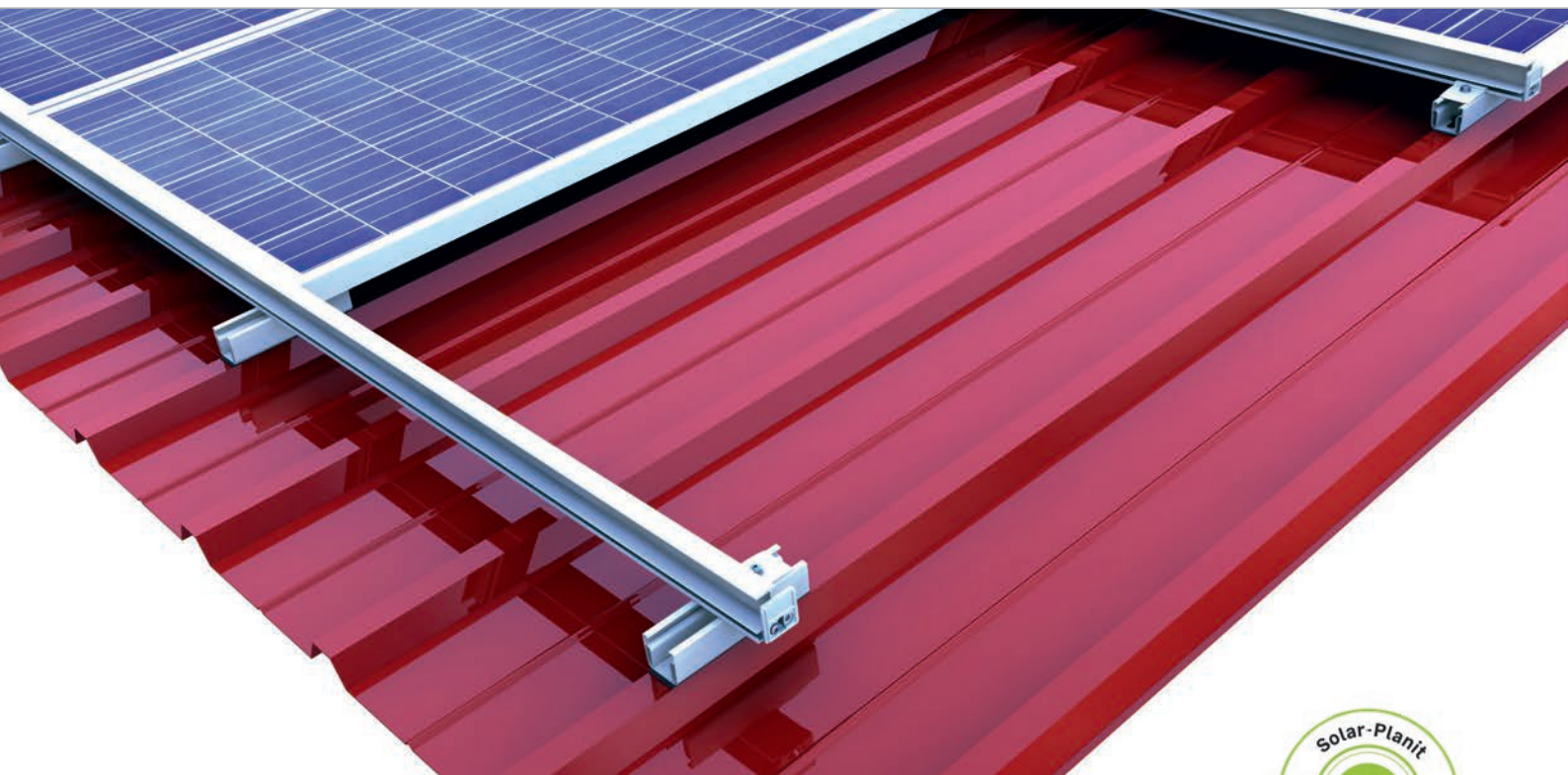
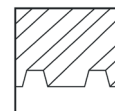


## Trapezoidal metal roof | insertion system

Insertion system with direct fixing and modules installed in portrait



### Combined – insertion rails on short rail

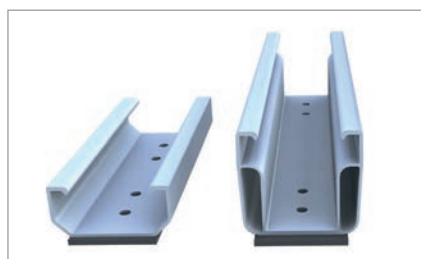
- components usable across different roof types
- excellent rear ventilation of the module
- mounting modules in portrait or in landscape

### product variants

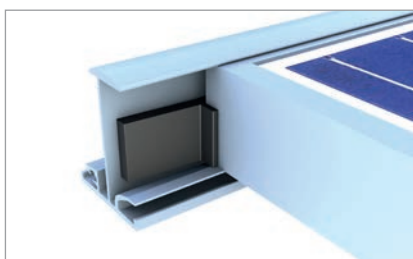
- short rail C24 for the yield-optimised installation
- short rail C47 for excellent module rear ventilation with extra space to the roof covering
- insertion rail in blank and black anodized – color matching the module

### Your benefits

- only a handful of components – quick assembly
- high-end installation aesthetics and time-efficient mounting thanks to insertion technology
- high holding forces thanks to chipless direct fixing with building authority-approved thin sheet screws
- tension-free and floating module mounting



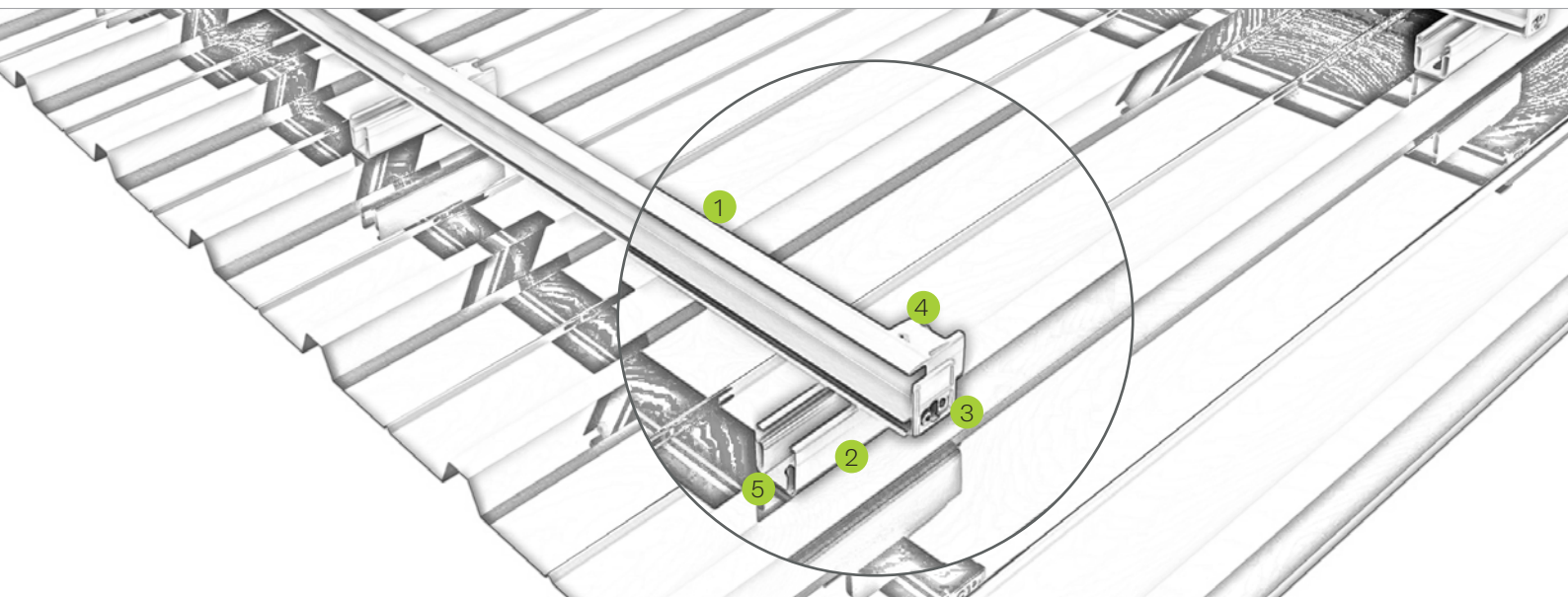
Short rail variations with EPDM seal



Module security at low roof inclination

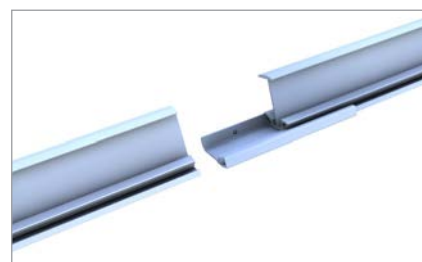


Insertion rail attached to short rail

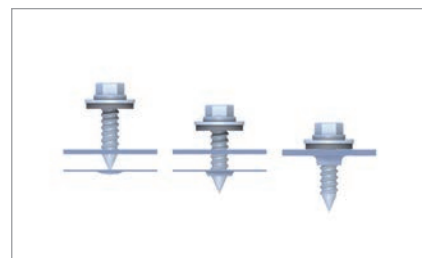


## Pic Designation

- 1 **Insertion rail**
  - insertion rails in blank/black anodized for frame heights
  - tension-free and floating module mounting
- 2 **Short rail**
  - material-saving fixation on the raised bead
  - entirely pre-assembled with EPDM-sealing and perforations
- 3 **Edge stop**
  - color-coordinated with the insertion rail
  - prevents modules from slipping out
- 4 **Cross-rail connector**
  - safe connection due to force and form closure
  - completely pre-assembled
- 5 **Mounting screw**
  - building authority-approved for chipless direct fixing
  - high holding forces thanks to funnel formation



Connecting insertion rails



Chipless screwing for high holding forces

Mounting video



novotegra GmbH  
Eisenbahnstraße 150 | 72072 Tübingen | Deutschland  
Tel. +49 7071 98987-0, info@novotegra.com  
www.novotegra.com

Subject to changes and errors excepted.  
Last updated: April 2021 / TP