



novotegra

Mounting solutions

Seamed metal roof



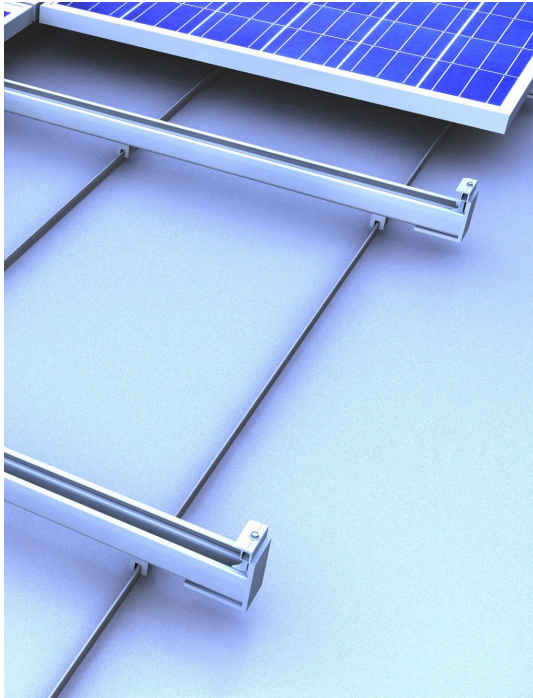
Mounting solution for seamed metal roofs



- Self-engineered mounting system, established on the market since 2006
- Easy and completely free of charge planning via online tool Solar-Planit
- Free first-time installation support
- Quick mounting thanks to pre-assembled parts
- Approvals by building authorities, TÜV and DEKRA certified quality, CE marking
- Static calculation according to Eurocode and SIA norms
- 12 year product warranty

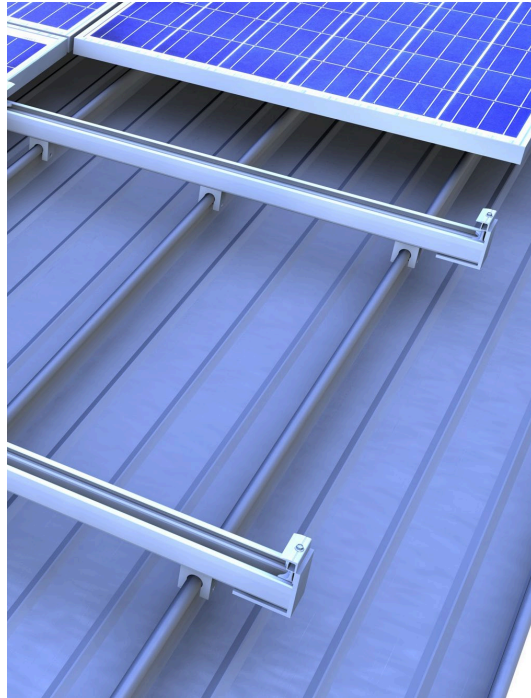
Variations mounting solutions seamed metal roof

Clamping system
Modules portrait
Standing seam



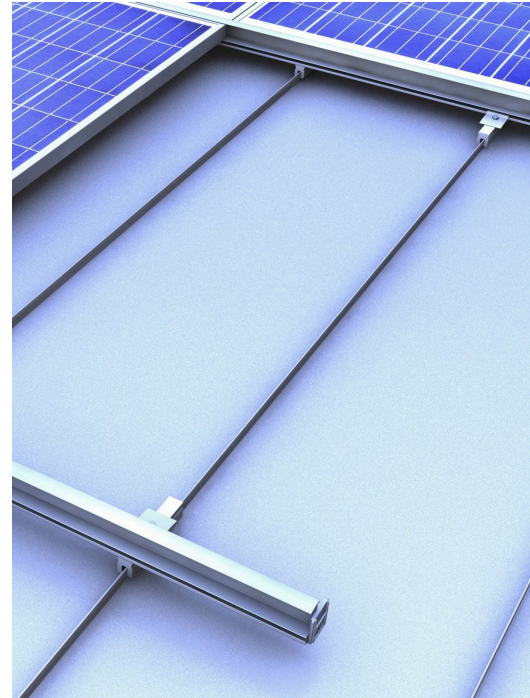
Standing seam clamp
with C-rail 47

Clamping system
Modules portrait
Round seam



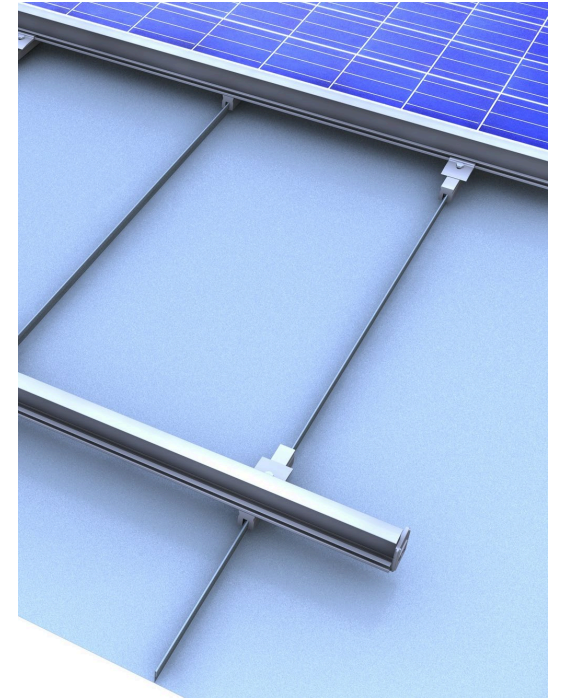
Round seam clamp
with C-rail 47

Insertion system
Modules portrait
Standing seam



Standing seam clamp IR
with insertion rail
(modules portrait)

Insertion system
Modules landscape
Standing seam



Standing seam clamp IR
with insertion rail
(modules landscape)

novotegra seamed metal roof

Your benefits:

- Attractive and unmistakable appearance thanks to rails and clamps in blank aluminium and black anodized
- Unique components, usable across systems
- Only two clamps for all frame heights
- C-rail also acts as a cable channel – tidy without loose cables, enough space for plugs
- Centric load distribution
- Quick mounting from above with easily graspable components
- Excellent module rear ventilation

For further benefits, mounting videos and installation manuals please visit [YouTube](#) or our [Website](#).

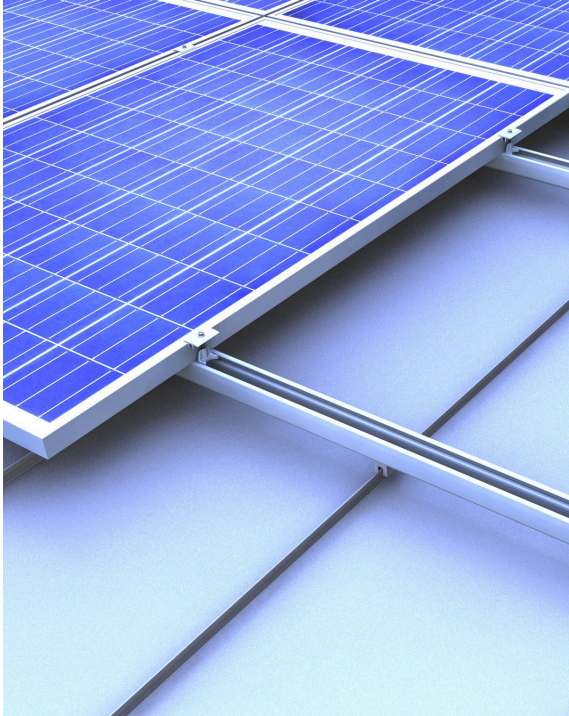


C-rail on round seam clamps

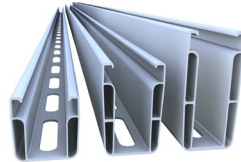


Clamping system

Clamping system with C-rail 47 | Details



- Middle and end clamps in blank and black anodized
- Installation-friendly thanks to click-in mechanism
- No falling out or slipping thanks to PE pad underneath the rail nut

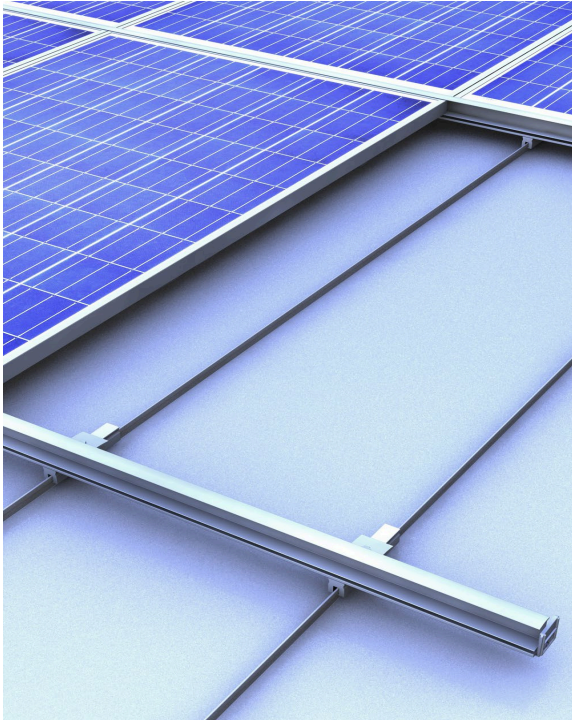


- C-rail usable across systems – available in blank aluminium or black anodized
- Can be stepped on throughout installation (from C47 upwards)
- C-rail also acts as a cable channel

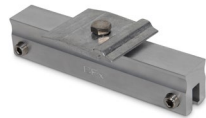


- Quick mounting - entirely pre-assembled seam clamps
- Also suitable for standing seam roofs made of copper
- Easy connection to the C-rail

Insertion system on standing seam clamp | Details



- Insertion rails in blank and black anodized for frame heights 30-50 mm in different lengths
- Tension-free mounting as well as attractive and unmistakable appearance for module portrait and landscape installation
- Quick mounting, module- and maintenance-friendly



- Easy connection to the insertion rail with cross rail connector IR
- Centric load distribution
- Entirely pre-assembled clamp, with stainless steel saddle also suitable for copper roofs



- Edge stop in blank or black anodized for optically tidy rails ends or as slip guard
- Same size for all insertion rails
- prevents modules from slipping out

More components



Expansion joint C47
Expansion joint to extend C-rails.



End caps C-rail black
End caps in black for optically tidy rail ends. UV and weather resistant.



Rail connector IR 5 x 100 A2
Connector to extend insertion rails.



Module slip guard set
Slip guard for fixing modules with and without mounting holes for mounting modules in portrait.

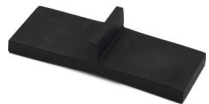
More components



A2SS-saddle for standing seam clamp 150
For mounting on copper roofs.



Grounding connector C-rail
Grounding connector set sufficient for clamping cables of 6-16 mm² or wire with diameter 6-10mm.



EPDM-T protection IR
EPDM T protection for fixing modules in insertion rails with minimal module slope < 10°.



Contact latch module clamp
Contact latch for equipotential bonding / lightning current carrying capacity between module frame and mounting system. Suitable for all middle clamps C-rail.

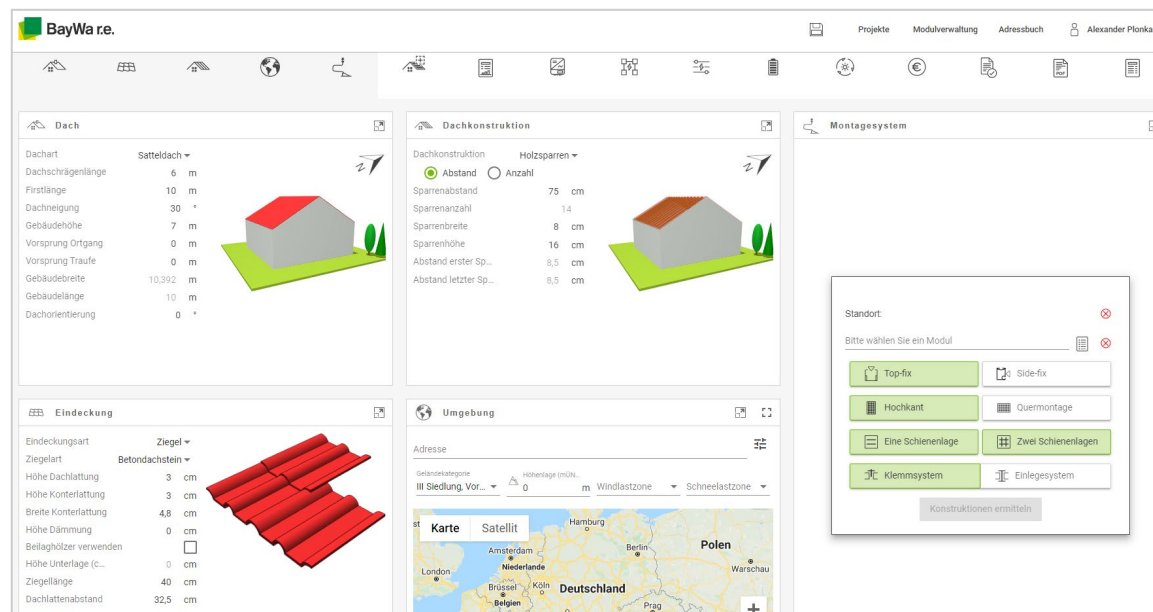
optional



Top cover C-rail
Cover to clip on to the C-rail if using as cable channel. Protects the cables against damage from UV radiation, animals and humidity.

optional

Our free planning tool Solar-Planit



Our Solar-Planit

- Complete system planning
 - Mounting system design & static calculation
 - Module configuration
 - Inverter design & suitable storage
 - Yield & profitability
 - System documentation
- System planning in a few minutes thanks to intuitive operation
- Free and webbased incl. free webinars
- Transmission to our webshop
- Availability can already be taken into account during planning

Use our [Solar-Planit!](#)

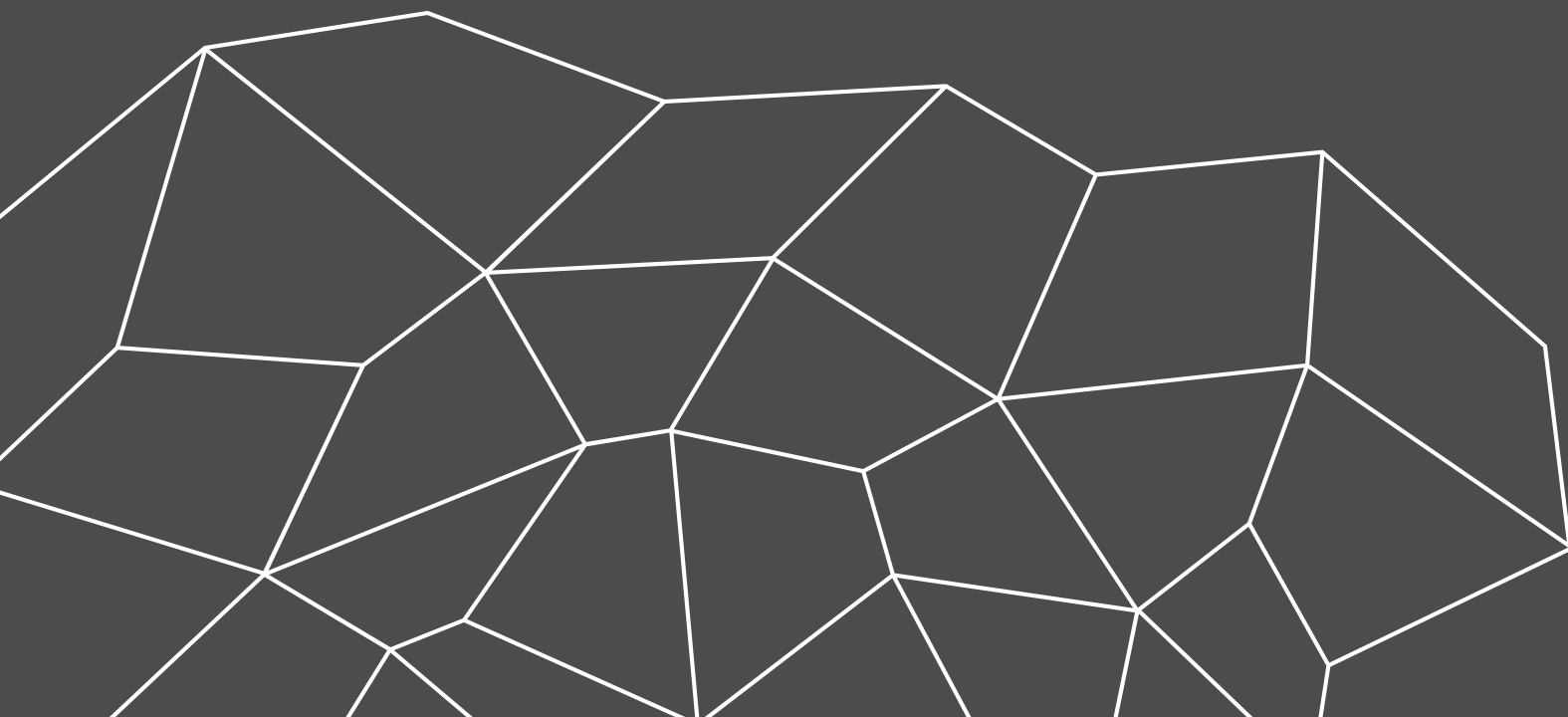
Our free first-time installation support



Our first-time installation support

- Support and instruction by a technical consultant during installation
- Instruction and support around the mounting system
- Discussion of the results of the static calculation
- Tips & tricks around Novotegra
- For free!

For more information, please visit our [Website](#) or contact your personal representative!



Thank you!

novotegra GmbH

info@novotegra.com

Copyright

© Copyright novotegra GmbH, 2021

The content of this presentation (including text, graphics, photos, tables, logos, etc.) and the presentation itself are protected by copyright.
They were created by novotegra GmbH independently.

Any dissemination of the presentation and/or content or parts thereof is only permitted with written permission by novotegra without written permission of novotegra, this document and/or parts of it must not be passed on, modified, published, translated or reproduced, either by photocopies, or by others – in particular by electronic procedures. This reservation also extends to inclusion in or evaluation by databases. Infringements will be prosecuted.